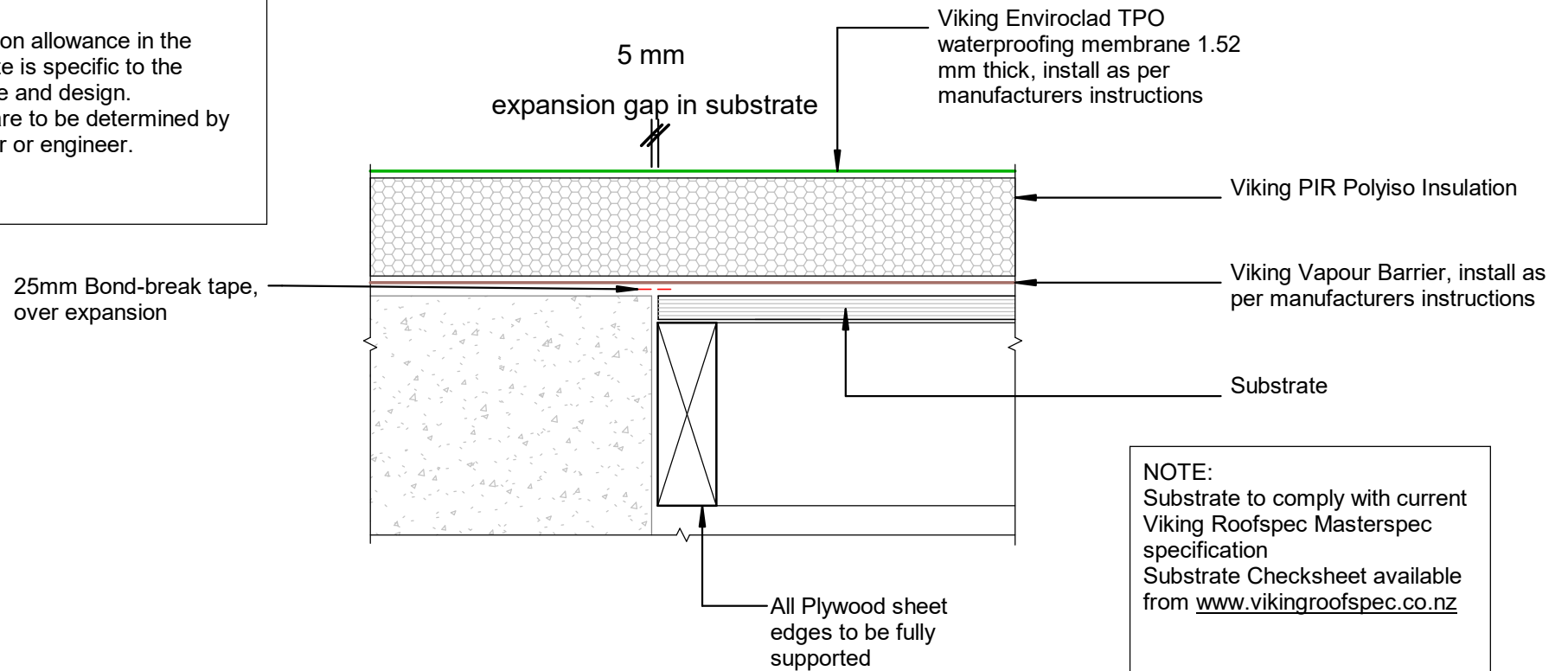


NOTE:
Expansion allowance in the substrate is specific to the structure and design. These are to be determined by designer or engineer.



NOTE:
Substrate to comply with current Viking Roofspec Masterspec specification
Substrate Checksheet available from www.vikingroofspec.co.nz

DRAWING TITLE

Viking WarmRoof - Enviroclad
Intersection_Substrate Expansion Ply to Concrete

NOTES:

- * Angle fillets are not required at upstands for Enviroclad
- * All fixings, cladding and structure are indicative only unless noted
- * All details to be read in conjunction with Viking Specifications

WarmRoof System is Branz Appraised - 713

DRAWING

INFORMATION ONLY

Scale:	Date:	Drawn:	Viking
Not to Scale	01/03/2022		

Detail Ref: **VIK_WRE_062A_INTSSUBS**